



Australian
Industrial Truck
Association

2017 FORKLIFT SAFETY SEMINARS



FORKLIFT SAFETY STARTS WITH YOU

AITA Safety Seminar

Australian Industrial Truck Association

2017



FORKLIFT

SAFETY

FORUM

What we will cover

- Welcome & Introduction
- Attachments
- User Safety
- Standards and Updates
- Licencing and Training
- Questions and Answers



FORKLIFT

SAFETY

FORUM

National Forklift safety week

Tri Nguyen, TVH AUSTRALASIA *Pty Ltd*

2017



FORKLIFT

SAFETY

FORUM

ATTACHMENT SAFETY

- Influences of Forklift truck Attachments

-  Residual capacity of forklift-truck

-  Visibility

-  Safety

-  Service & Maintenance: Life Cycle cost

-  Productivity and Economy



FORKLIFT

SAFETY

FORUM

ATTACHMENT SAFETY



Lateral positioning



Opening/closing- fork
positioning



Opening/closing- clamping



Rotating



Push Pull



FORKLIFT

SAFETY

FORUM

Sideshift



FORKLIFT

SAFETY

FORUM

Fork Positioner



FORKLIFT

SAFETY

FORUM

Clamps



Rotating Clamp



Carton Clamp



Bale Clamp



FORKLIFT

SAFETY

FORUM

Rotator



AITA



FORKLIFT

SAFETY

FORUM

Push Pull



AITA



FORKLIFT

SAFETY

FORUM

ATTACHMENT SAFETY



HYDRAULIC ATTACHMENTS



SLIP ON ATTACHMENTS



FORKLIFT

SAFETY

FORUM

ATTACHMENT SAFETY

FORKLIFT

SERIAL NO. D90 842678 104 5

CAPACITY 1800 kg

AT 80 CM LOAD CENTRE WITH UPRIGHTS VERTICAL

TYPE G

CHARGE

MAXIMUM RATING

KILOGRAMS	A	B
1 800	60	365

FOUR RATING WITH ATTACHMENTS
SEE ATTACHMENT NAME PLATE

DO NOT EXCEED RATING

Load Limit (kg)

Load Centre (cm)

Height forks will lift (cm)

- Make sure all Attachments are listed on the rating plate and are rated by the forklift manufacturer otherwise do not use the forklift with the attachment.

FORKLIFT

SAFETY

FORUM

ATTACHMENT SAFETY



- **Nameplate and markings are legible**
- **Attachments to be used are approved and listed on rating plate**
- **Condition and mounting of attachments are satisfactory**
- **Lift and tilt systems including hoses and switches are serviceable**



FORKLIFT

SAFETY

FORUM

ATTACHMENT SAFETY

How to select the right forklift truck attachment?



Application

+



Attachment

+



Forklift truck

=

The perfect combination!



FORKLIFT

SAFETY

FORUM

THANK YOU



FORKLIFT

SAFETY

FORUM



Australian
Industrial Truck
Association

2017 FORKLIFT SAFETY SEMINARS



FORKLIFT SAFETY STARTS WITH YOU

USER SAFETY

Craig Williams, *Clark Equipment*

2017



FORKLIFT

SAFETY

FORUM

What we will cover

- Pedestrian Safety
- Reverse Warnings
- Reliance on Technology
- Tyre Varieties
- Pneumatic tyre issues
- Split Rims
- Jib Attachments
- AITA Public Access Bulletins



FORKLIFT

SAFETY

FORUM

Pedestrian Safety

- Worksafe Qld – Traffic Management
- Dangers associated with loading/unloading trucks
- Separation of workers in workplace
- Use of personal proximity sensors etc



FORKLIFT

SAFETY

FORUM

Reverse Warnings

- Different types of reverse warnings:
 - Reverse alarm – fixed noise
 - Smart alarm
 - Blue reverse lights
 - Reverse cameras
 - Reverse sensors
 - Personnel detection



FORKLIFT

SAFETY

FORUM

Reverse Warnings

- Reverse alarm – fixed vs



FORKLIFT

SAFETY

FORUM

Reverse Warnings

- Blue reverse lights



STOP!

IF YOU SEE THIS **BLUE SPOT**
ON THE FLOOR, WATCH OUT
FOR FORKLIFT TRAFFIC!

AITA

FORKLIFT

SAFETY

FORUM

Reverse Warnings

- Reverse cameras



FORKLIFT

SAFETY

FORUM

Reverse Warnings

- Reverse sensors



FORKLIFT

SAFETY

FORUM

Reverse Warnings

- Personnel detection



FORKLIFT

SAFETY

FORUM

Reliance on Technology

- Two questions to consider:
- 1 – What if it fails ?
- 2 – Introduce poor behaviour ?



FORKLIFT

SAFETY

FORUM

Tyre Types

- Various types
 - Pneumatic (air filled)
 - Solids / resilient (solid core)
 - Cushion (solid with steel band base)

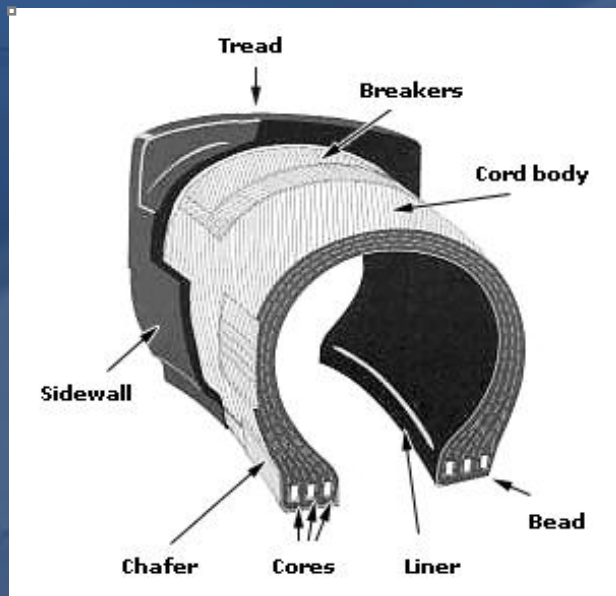


FORKLIFT

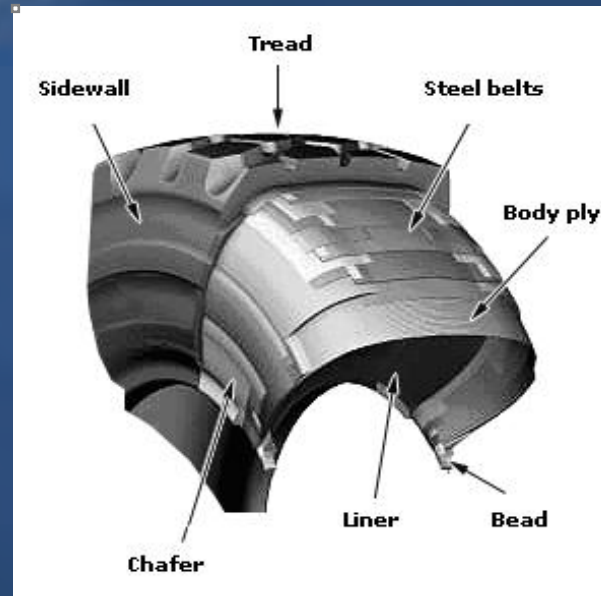
SAFETY

FORUM

Tyre Types



Cross ply pneumatic



Radial ply pneumatic

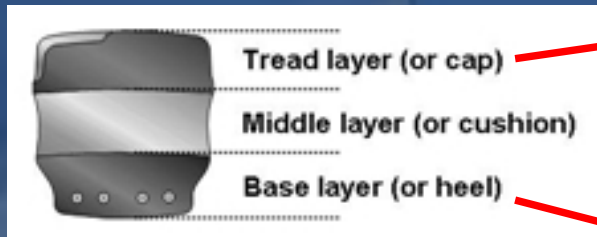


FORKLIFT

SAFETY

FORUM

Tyre Types



Resilient / Solid tyre

FORKLIFT

SAFETY

FORUM

Tyre Types

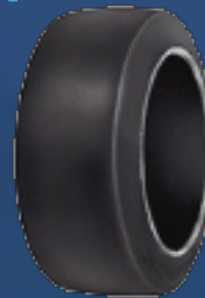
Types

- Standard (black)
- Non marking (white)



Tread Design Options

- Lug
- Half tread (HT)
- Smooth or Slick tread (SM)



FORKLIFT

SAFETY

FORUM

Tyre Types

- The 60 J / Safety line is the wear out point of a solid / resilient
Rapid wear will occur after this line as you are now into the
softer middle layer



FORKLIFT

SAFETY

FORUM

Pneumatic tyres

- Radial tyre issues



AITA

Pneumatic tyres

- Zipper failure
 - Safety bulletin



Zipper failure on a radial tyre

AITA



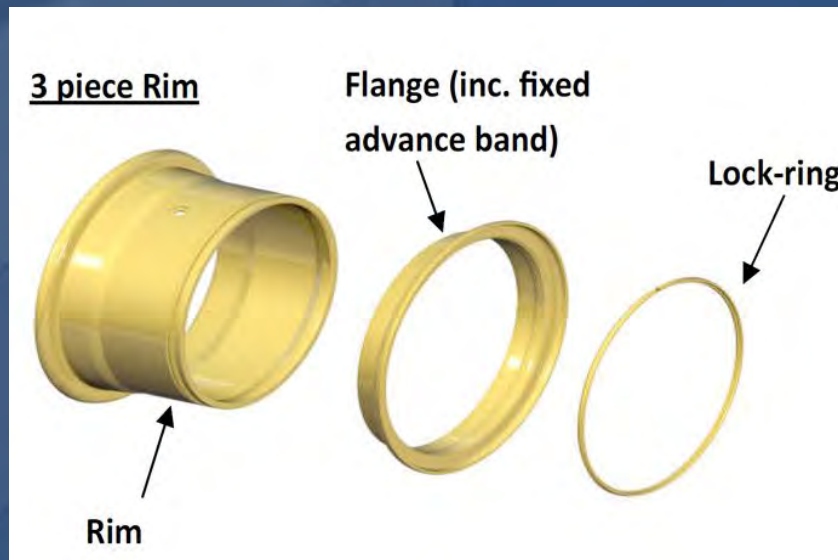
FORKLIFT

SAFETY

FORUM

Split Rims

- Safework NSW Safety Alert
- Multi piece rims



FORKLIFT

SAFETY

FORUM

Split Rims

- Deflate and / or remove valve
- Undo wheel nuts, not assembly nuts
- Inspect the tyre
- Clean all parts before re-assembly
- Use a cage to inflate the tyre in
- Stand to the side, using remote filler



Use of Jib Attachments

- De-rated due to swinging load and extended pick up point.



FORKLIFT

SAFETY

FORUM

Use of Jib Attachments

- Specific rating shown on truck rating plate
- Jib attachment **ONLY** has location marks
- Jib attachment does not display SWL.
- Secure the jib to the forklift (chains or pins)



FORKLIFT

SAFETY

FORUM

AITA Public Bulletins

- AITA technical bulletins now freely available
- www.aita.net.au
- Fair Wear and Tear Guide – 2006
 - Under revision & due for release this year



FORKLIFT

SAFETY

FORUM

END



Australian
Industrial Truck
Association

2017 FORKLIFT SAFETY SEMINARS



FORKLIFT SAFETY STARTS WITH YOU

ENJOY A SHORT BREAK